

Hinges

Technopolymer certified self-extinguish

MATERIAL

Glass-fibre reinforced polyamide based (PA) technopolymer, certified self-extinguishing UL-94 V0, black colour, matte finish.

ROTATING PIN

AISI 303 stainless steel.

STANDARD EXECUTION

Pass-through holes for countersunk head screws.

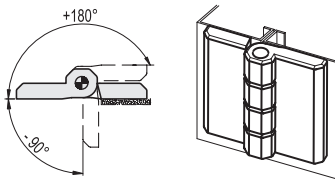
FEATURES AND APPLICATIONS

The CFMQ-AE-V0 hinge can be used in all areas for which specific regulations require the use of materials capable of preventing the risk of fire. CFMQ-AE-V0 hinge can be assembled with CFSQ hinge with built-in safety switch.

ROTATION ANGLE (APPROXIMATE VALUE)

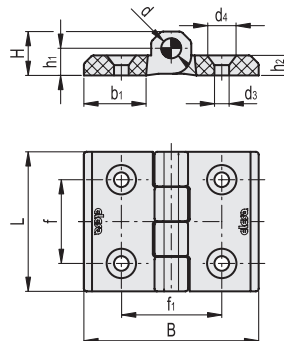
Max 270° (-90° and +180° being 0° the condition where the two interconnected surfaces are on the same plane). Do not exceed the rotation angle limit so as not to prejudice the hinge mechanical performance.

To choose the convenient type and the right number of hinges for your application, see the Guidelines.



Resistance tests	Axial Stress	Radial Stress	90° Angled Stress
Description	Max limit static load Sa [N]	Max limit static load Sr [N]	Max limit static load S90 [N]
CFMQ.60-45-AE-V0 SH-6	1800	3200	900

The max static load is the value beyond which the material may break thus prejudicing the hinge performance. Obviously, a suitable coefficient must be applied to this value, according to the importance and the safety level of the specific application.



Code	Description	L	B	f±0.25	f1±0.25	H	h1	h2	b1	d	d3	d4	C# [Nm]	
149041	CFMQ.60-AE-V0-45-SH-6	60	70	34	45	14.5	8	8	26	8	6.5	12.5	5	62

Suggested tightening torque for assembly screws.