

Torque amplifier collar

Technopolymer

BEARING CASE MATERIAL

Glass-fibre reinforced polyamide based (PA) technopolymer, black colour, matte finish.

STANDARD EXECUTIONS

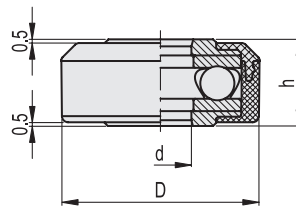
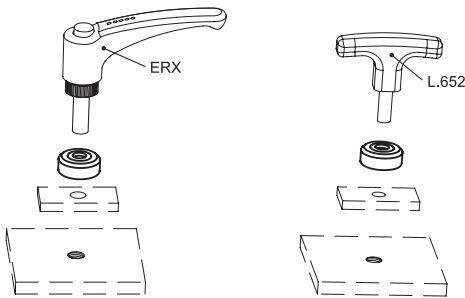
- **CMC**: AISI 52100 steel axial bearing, zinc-plated steel washers.
- **CMC-SST**: AISI 440 C stainless steel axial bearing, AISI 303 stainless steel washers.

FEATURES AND APPLICATIONS

Used in combination with clamping levers ERX., ERW., MRX., ERF., clamping knobs type VCT.SOFT or handles type L.652, CMC torque amplifier collars double the clamping force applied at equal torque due to the presence of a bearing acting to reduce friction.



ELESA Original design



CMC

Code	Description	D	h	d	⚖️
32401	CMC.32-8	32	14	8	38
32402	CMC.32-10	32	14	10	37
32403	CMC.32-12	32	14	12	36

CMC-SST

STAINLESS STEEL

Code	Description	D	h	d	⚖️
32411	CMC.32-SST-8	32	14	8	38
32412	CMC.32-SST-10	32	14	10	37
32413	CMC.32-SST-12	32	14	12	36

