

## Breather caps

with splash guard, technopolymer

### COVER

- Polyamide based (PA) technopolymer, semi-matte finish.
- SFP.....: RAL 2004 orange, marked "OIL".
- SFP.....-C9: RAL 9005 black colour, marked "OIL".
- SFP.....-C2-N: RAL 2004 orange, without "OIL" mark.
- SFP.....-C9-N: RAL 9005 black colour, without "OIL" mark.

### THREADED FITTING

Polyamide based (PA) technopolymer, black colour, semi-matte finish.

### PACKING RING

NBR synthetic rubber.

### SPLASH GUARD

Technopolymer.

### STANDARD EXECUTIONS

- **SFP.**: without air filter (black splash guard).
- **SFP+F-FIL.**: with "tech-fil" air filter in zinc-plated steel wire (orange splash guard).
- **SFP+F-FOAM.**: with "tech-foam" air filter in polyurethane foam mesh (polyester base), air filtration 40 μ (grey splash guard).
- **SFP-BA+F.**: with "tech-foam" air filter in polyurethane foam mesh (polyester base), air filtration 40 μ (grey splash guard).

Zinc-plated steel sheet bayonet.  
Chrome-plated steel safety chain.

### MAXIMUM CONTINUOUS WORKING TEMPERATURE

100°C.

### FEATURES AND APPLICATIONS

SFP breather caps come complete with splash guard device (ELESA original design) that prevents oil loss and are particularly suitable for use where oil is violently agitated and could be splashed against breather cap.



ELESA Original design

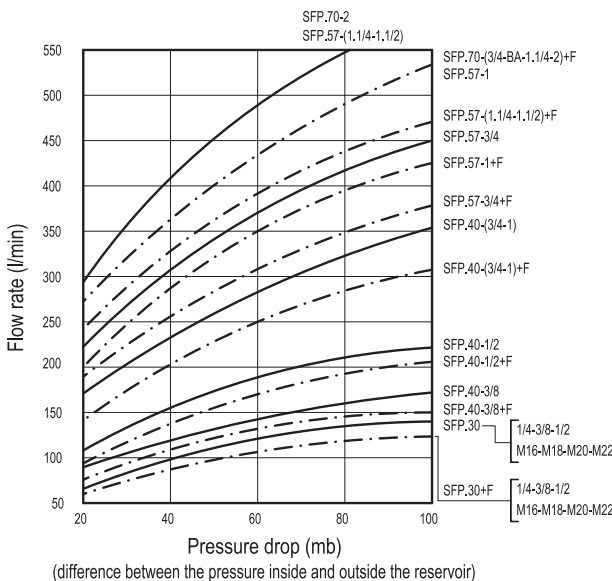


### TECHNICAL DATA

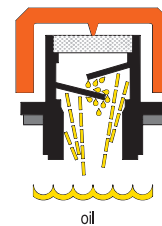
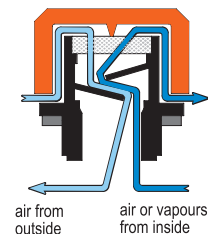
Air flow rate for each model can be determined from the graph calculating the difference between the pressure inside and outside the reservoir.

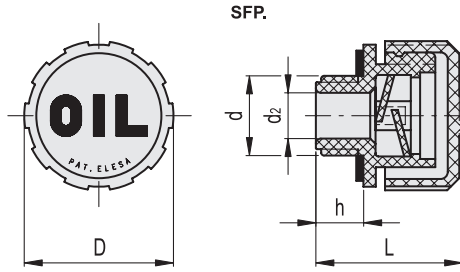
### SPECIAL EXECUTION ON REQUEST

Threaded connector also with NPT thread (National Taper Pipe Thread - ANSI-ASME B1-20) for the codes marked with # in the table.

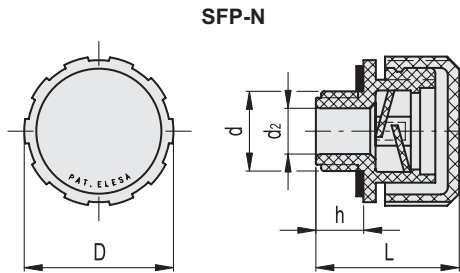


### Operating layout





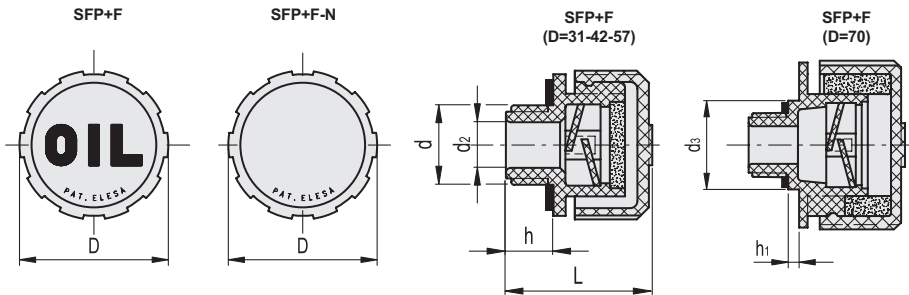
SFP.		SFP.		d	D	L	d2	h	⚖
Code	Description	Code	Description						
53941	SFP.30-16x1.5	53941-C9	SFP.30-16x1.5-C9	M16x1.5	31	29.5	10	9.5	10
53961	SFP.30-18x1.5	53961-C9	SFP.30-18x1.5-C9	M18x1.5	31	29.5	10	9.5	10
53981	SFP.30-20x1.5	53981-C9	SFP.30-20x1.5-C9	M20x1.5	31	29.5	12	9.5	11
53991	SFP.30-22x1.5	53991-C9	SFP.30-22x1.5-C9	M22x1.5	31	29.5	12	9.5	11
53935	SFP.30-1/4#	53935-C9	SFP.30-1/4-C9#	G 1/4	31	29.5	8	9.5	10
54001	SFP.30-3/8	54001-C9	SFP.30-3/8-C9	G 3/8	31	29.5	10	9.5	11
54101	SFP.30-1/2	54101-C9	SFP.30-1/2-C9	G 1/2	31	29.5	12	9.5	11
56651	SFP.40-3/8#	56651-C9	SFP.40-3/8-C9#	G 3/8	42	36.5	10	11.5	20
56671	SFP.40-1/2#	56671-C9	SFP.40-1/2-C9#	G 1/2	42	36.5	12	11.5	22
54201	SFP.40-3/4#	54201-C9	SFP.40-3/4-C9#	G 3/4	42	36.5	18	11.5	22
54301	SFP.40-1	54301-C9	SFP.40-1-C9	G 1	42	36.5	18	11.5	22
56701	SFP.57-3/4#	56701-C9	SFP.57-3/4-C9#	G 3/4	57	42	18	14	40
56731	SFP.57-1	56731-C9	SFP.57-1-C9	G 1	57	42	23	14	40
54401	SFP.57-1¼	54401-C9	SFP.57-1¼-C9	G1 1/4	57	44	28	16	41
54501	SFP.57-1½	54501-C9	SFP.57-1½-C9	G1 1/2	57	44	28	16	45
54876	SFP.70-2	54876-C9	SFP.70-2-C9	G 2	70	59	23	17	82



SFP-N		SFP-N		d	D	L	d2	h	⚖
Code	Description	Code	Description						
53941-C2-N	SFP.30-16x1.5-C2-N	53941-C9-N	SFP.30-16x1.5-C9-N	M16x1.5	31	29.5	10	9.5	10
53961-C2-N	SFP.30-18x1.5-C2-N	53961-C9-N	SFP.30-18x1.5-C9-N	M18x1.5	31	29.5	10	9.5	10
53981-C2-N	SFP.30-20x1.5-C2-N	53981-C9-N	SFP.30-20x1.5-C9-N	M20x1.5	31	29.5	12	9.5	11
53991-C2-N	SFP.30-22x1.5-C2-N	53991-C9-N	SFP.30-22x1.5-C9-N	M22x1.5	31	29.5	12	9.5	11
53935-C2-N	SFP.30-1/4-C2-N#	53935-C9-N	SFP.30-1/4-C9-N#	G 1/4	31	29.5	8	9.5	10
54001-C2-N	SFP.30-3/8-C2-N	54001-C9-N	SFP.30-3/8-C9-N	G 3/8	31	29.5	10	9.5	11
54101-C2-N	SFP.30-1/2-C2-N	54101-C9-N	SFP.30-1/2-C9-N	G 1/2	31	29.5	12	9.5	11
56651-C2-N	SFP.40-3/8-C2-N#	56651-C9-N	SFP.40-3/8-C9-N#	G 3/8	42	36.5	10	11.5	20
56671-C2-N	SFP.40-1/2-C2-N#	56671-C9-N	SFP.40-1/2-C9-N#	G 1/2	42	36.5	12	11.5	22
54201-C2-N	SFP.40-3/4-C2-N#	54201-C9-N	SFP.40-3/4-C9-N#	G 3/4	42	36.5	18	11.5	22
54301-C2-N	SFP.40-1-C2-N	54301-C9-N	SFP.40-1-C9-N	G 1	42	36.5	18	11.5	22
56701-C2-N	SFP.57-3/4-C2-N#	56701-C9-N	SFP.57-3/4-C9-N#	G 3/4	57	42	18	14	40
56731-C2-N	SFP.57-1-C2-N	56731-C9-N	SFP.57-1-C9-N	G 1	57	42	23	14	40
54401-C2-N	SFP.57-1¼-C2-N	54401-C9-N	SFP.57-1¼-C9-N	G1 1/4	57	44	28	16	41
54501-C2-N	SFP.57-1½-C2-N	54501-C9-N	SFP.57-1½-C9-N	G1 1/2	57	44	28	16	45
54876-C2-N	SFP.70-2-C2-N	54876-C9-N	SFP.70-2-C9-N	G 2	70	59	23	17	82

# Types available on request with NPT thread (National Taper Pipe Thread - ANSI-ASME B1-20).





SFP+F-FIL

SFP+F-FIL

Code	Description	Code	Description	d	D	L	d2	h	⚖
53951	SFP.30-16x1.5+F FIL	53951-C9	SFP.30-16x1.5+F FIL-C9	M16x1.5	31	29.5	10	9.5	12
53971	SFP.30-18x1.5+F FIL	53971-C9	SFP.30-18x1.5+F FIL-C9	M18x1.5	31	29.5	10	9.5	13
53986	SFP.30-20x1.5+F FIL	53986-C9	SFP.30-20x1.5+F FIL-C9	M20x1.5	31	29.5	12	9.5	13
53996	SFP.30-22x1.5+F FIL	53996-C9	SFP.30-22x1.5+F FIL-C9	M22x1.5	31	29.5	12	9.5	14
53937	SFP.30-1/4+F FIL	53937-C9	SFP.30-1/4+F FIL-C9	G 1/4	31	29.5	8	9.5	11
54021	SFP.30-3/8+F FIL	54021-C9	SFP.30-3/8+F FIL-C9	G 3/8	31	29.5	10	9.5	13
54121	SFP.30-1/2+F FIL	54121-C9	SFP.30-1/2+F FIL-C9	G 1/2	31	29.5	12	9.5	15
56661	SFP.40-3/8+F FIL	56661-C9	SFP.40-3/8+F FIL-C9	G 3/8	42	36.5	10	11.5	23
56681	SFP.40-1/2+F FIL	56681-C9	SFP.40-1/2+F FIL-C9	G 1/2	42	36.5	12	11.5	26
54221	SFP.40-3/4+F FIL	54221-C9	SFP.40-3/4+F FIL-C9	G 3/4	42	36.5	18	11.5	28
54321	SFP.40-1+F FIL	54321-C9	SFP.40-1+F FIL-C9	G 1	42	36.5	18	11.5	24
56711	SFP.57-3/4+F FIL	56711-C9	SFP.57-3/4+F FIL-C9	G 3/4	57	42	18	14	50
56741	SFP.57-1+F FIL	56741-C9	SFP.57-1+F FIL-C9	G 1	57	42	23	14	50
54421	SFP.57-1¼+F FIL	54421-C9	SFP.57-1¼+F FIL-C9	G1 1/4	57	44	28	16	50
54521	SFP.57-1½+F FIL	54521-C9	SFP.57-1½+F FIL-C9	G1 1/2	57	44	28	16	54

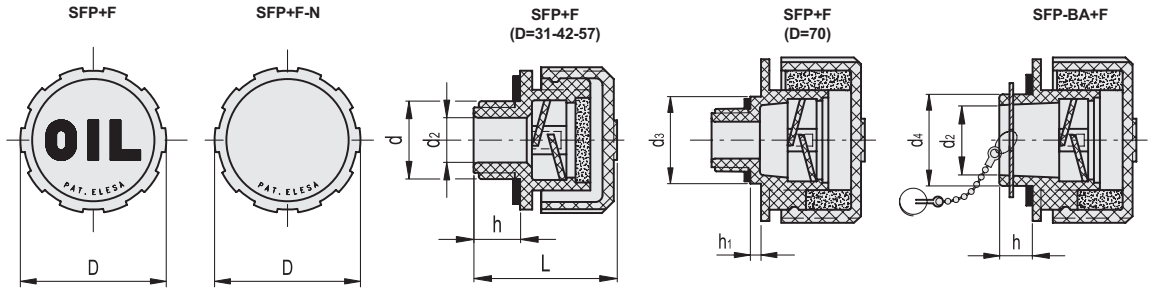
SFP+F-FIL-N

SFP+F-FIL-N

Code	Description	Code	Description	d	D	L	d2	h	⚖
53951-C2-N	SFP.30-16x1.5+F FIL-C2-N	53951-C9-N	SFP.30-16x1.5+F FIL-C9-N	M16x1.5	31	29.5	10	9.5	12
53971-C2-N	SFP.30-18x1.5+F FIL-C2-N	53971-C9-N	SFP.30-18x1.5+F FIL-C9-N	M18x1.5	31	29.5	10	9.5	13
53986-C2-N	SFP.30-20x1.5+F FIL-C2-N	53986-C9-N	SFP.30-20x1.5+F FIL-C9-N	M20x1.5	31	29.5	12	9.5	13
53996-C2-N	SFP.30-22x1.5+F FIL-C2-N	53996-C9-N	SFP.30-22x1.5+F FIL-C9-N	M22x1.5	31	29.5	12	9.5	14
53937-C2-N	SFP.30-1/4+F FIL-C2-N	53937-C9-N	SFP.30-1/4+F FIL-C9-N	G 1/4	31	29.5	8	9.5	11
54021-C2-N	SFP.30-3/8+F FIL-C2-N	54021-C9-N	SFP.30-3/8+F FIL-C9-N	G 3/8	31	29.5	10	9.5	13
54121-C2-N	SFP.30-1/2+F FIL-C2-N	54121-C9-N	SFP.30-1/2+F FIL-C9-N	G 1/2	31	29.5	12	9.5	15
56661-C2-N	SFP.40-3/8+F FIL-C2-N	56661-C9-N	SFP.40-3/8+F FIL-C9-N	G 3/8	42	36.5	10	11.5	23
56681-C2-N	SFP.40-1/2+F FIL-C2-N	56681-C9-N	SFP.40-1/2+F FIL-C9-N	G 1/2	42	36.5	12	11.5	26
54221-C2-N	SFP.40-3/4+F FIL-C2-N	54221-C9-N	SFP.40-3/4+F FIL-C9-N	G 3/4	42	36.5	18	11.5	28
54321-C2-N	SFP.40-1+F FIL-C2-N	54321-C9-N	SFP.40-1+F FIL-C9-N	G 1	42	36.5	18	11.5	24
56711-C2-N	SFP.57-3/4+F FIL-C2-N	56711-C9-N	SFP.57-3/4+F FIL-C9-N	G 3/4	57	42	18	14	50
56741-C2-N	SFP.57-1+F FIL-C2-N	56741-C9-N	SFP.57-1+F FIL-C9-N	G 1	57	42	23	14	50
54421-C2-N	SFP.57-1¼+F FIL-C2-N	54421-C9-N	SFP.57-1¼+F FIL-C9-N	G1 1/4	57	44	28	16	50
54521-C2-N	SFP.57-1½+F FIL-C2-N	54521-C9-N	SFP.57-1½+F FIL-C9-N	G1 1/2	57	44	28	16	54

# Types available on request with NPT thread (National Taper Pipe Thread - ANSI-ASME B1-20).

Accessories for hydraulic systems 15



SFP+F-FOAM

SFP+F-FOAM

Code	Description	Code	Description	d	D	L	d2	d3	h	h1	⚖️
53952	SFP.30-16x1.5+F FOAM	53952-C9	SFP.30-16x1.5+F FOAM-C9	M16x1.5	31	29.5	10	-	9.5	-	12
53972	SFP.30-18x1.5+F FOAM	53972-C9	SFP.30-18x1.5+F FOAM-C9	M18x1.5	31	29.5	10	-	9.5	-	13
53987	SFP.30-20x1.5+F FOAM	53987-C9	SFP.30-20x1.5+F FOAM-C9	M20x1.5	31	29.5	12	-	9.5	-	13
53997	SFP.30-22x1.5+F FOAM	53997-C9	SFP.30-22x1.5+F FOAM-C9	M22x1.5	31	29.5	12	-	9.5	-	14
53938	SFP.30-1/4+F FOAM	53938-C9	SFP.30-1/4+F FOAM-C9	G 1/4	31	29.5	8	-	9.5	-	11
54022	SFP.30-3/8+F FOAM	54022-C9	SFP.30-3/8+F FOAM-C9	G 3/8	31	29.5	10	-	9.5	-	13
54122	SFP.30-1/2+F FOAM	54122-C9	SFP.30-1/2+F FOAM-C9	G 1/2	31	29.5	12	-	9.5	-	15
56662	SFP.40-3/8+F FOAM#	56662-C9	SFP.40-3/8+F FOAM-C9#	G 3/8	42	36.5	10	-	11.5	-	23
56682	SFP.40-1/2+F FOAM#	56682-C9	SFP.40-1/2+F FOAM-C9#	G 1/2	42	36.5	12	-	11.5	-	26
54222	SFP.40-3/4+F FOAM#	54222-C9	SFP.40-3/4+F FOAM-C9#	G 3/4	42	36.5	18	-	11.5	-	28
54322	SFP.40-1+F FOAM	54322-C9	SFP.40-1+F FOAM-C9	G 1	42	36.5	18	-	11.5	-	24
56712	SFP.57-3/4+F FOAM#	56712-C9	SFP.57-3/4+F FOAM-C9#	G 3/4	57	42	18	-	14	-	50
56742	SFP.57-1+F FOAM	56742-C9	SFP.57-1+F FOAM-C9	G 1	57	42	23	-	14	-	50
54422	SFP.57-1¼+F FOAM	54422-C9	SFP.57-1¼+F FOAM-C9	G1 1/4	57	44	28	-	16	-	50
54522	SFP.57-1½+F FOAM	54522-C9	SFP.57-1½+F FOAM-C9	G1 1/2	57	44	28	-	16	-	54
54851	SFP.70-3/4+F FOAM#	54851-C9	SFP.70-3/4+F FOAM-C9#	G 3/4	70	63	16	35	15	6	80
54861	SFP.70-1¼+F FOAM	54861-C9	SFP.70-1¼+F FOAM-C9	G1 1/4	70	59	23	-	17	-	80
54878	SFP.70-2+F FOAM	54878-C9	SFP.70-2+F FOAM-C9	G 2	70	59	23	-	17	-	85

SFP+F-FOAM-N

SFP+F-FOAM-N

Code	Description	Code	Description	d	D	L	d2	d3	h	h1	⚖️
53952-C2-N	SFP.30-16x1.5+F FOAM-C2-N	53952-C9-N	SFP.30-16x1.5+F FOAM-C9-N	M16x1.5	31	29.5	10	-	9.5	-	12
53972-C2-N	SFP.30-18x1.5+F FOAM-C2-N	53972-C9-N	SFP.30-18x1.5+F FOAM-C9-N	M18x1.5	31	29.5	10	-	9.5	-	13
53987-C2-N	SFP.30-20x1.5+F FOAM-C2-N	53987-C9-N	SFP.30-20x1.5+F FOAM-C9-N	M20x1.5	31	29.5	12	-	9.5	-	13
53997-C2-N	SFP.30-22x1.5+F FOAM-C2-N	53997-C9-N	SFP.30-22x1.5+F FOAM-C9-N	M22x1.5	31	29.5	12	-	9.5	-	14
53938-C2-N	SFP.30-1/4+F FOAM-C2-N	53938-C9-N	SFP.30-1/4+F FOAM-C9-N	G 1/4	31	29.5	8	-	9.5	-	11
54022-C2-N	SFP.30-3/8+F FOAM-C2-N	54022-C9-N	SFP.30-3/8+F FOAM-C9-N	G 3/8	31	29.5	10	-	9.5	-	13
54122-C2-N	SFP.30-1/2+F FOAM-C2-N	54122-C9-N	SFP.30-1/2+F FOAM-C9-N	G 1/2	31	29.5	12	-	9.5	-	15
56662-C2-N	SFP.40-3/8+F FOAM-C2-N#	56662-C9-N	SFP.40-3/8+F FOAM-C9-N#	G 3/8	42	36.5	10	-	11.5	-	23
56682-C2-N	SFP.40-1/2+F FOAM-C2-N#	56682-C9-N	SFP.40-1/2+F FOAM-C9-N#	G 1/2	42	36.5	12	-	11.5	-	26
54222-C2-N	SFP.40-3/4+F FOAM-C2-N#	54222-C9-N	SFP.40-3/4+F FOAM-C9-N#	G 3/4	42	36.5	18	-	11.5	-	28
54322-C2-N	SFP.40-1+F FOAM-C2-N	54322-C9-N	SFP.40-1+F FOAM-C9-N	G 1	42	36.5	18	-	11.5	-	24
56712-C2-N	SFP.57-3/4+F FOAM-C2-N#	56712-C9-N	SFP.57-3/4+F FOAM-C9-N#	G 3/4	57	42	18	-	14	-	50
56742-C2-N	SFP.57-1+F FOAM-C2-N	56742-C9-N	SFP.57-1+F FOAM-C9-N	G 1	57	42	23	-	14	-	50
54422-C2-N	SFP.57-1¼+F FOAM-C2-N	54422-C9-N	SFP.57-1¼+F FOAM-C9-N	G1 1/4	57	44	28	-	16	-	50
54522-C2-N	SFP.57-1½+F FOAM-C2-N	54522-C9-N	SFP.57-1½+F FOAM-C9-N	G1 1/2	57	44	28	-	16	-	54
54851-C2-N	SFP.70-3/4+F FOAM-C2-N#	54851-C9-N	SFP.70-3/4+F FOAM-C9-N#	G 3/4	70	63	16	35	15	6	80
54861-C2-N	SFP.70-1¼+F FOAM-C2-N	54861-C9-N	SFP.70-1¼+F FOAM-C9-N	G1 1/4	70	59	23	-	17	-	80
54878-C2-N	SFP.70-2+F FOAM-C2-N	54878-C9-N	SFP.70-2+F FOAM-C9-N	G 2	70	59	23	-	17	-	85

SFP-BA+F

SFP-BA+F

Code	Description	Code	Description	D	L	d2	d4	h	⚖️
54881	SFP.70-BA+F FOAM	54881-C9	SFP.70-BA+F FOAM-C9	70	56	30	39	14	91

SFP-BA+F-N

SFP-BA+F-N

Code	Description	Code	Description	D	L	d2	d4	h	⚖️
54881-C2-N	SFP.70-BA+F FOAM-C2-N	54881-C9-N	SFP.70-BA+F FOAM-C9-N	70	56	30	39	14	91

# Types available on request with NPT thread (National Taper Pipe Thread - ANSI-ASME B1-20).

