

Plugs

with hexagon socket, technopolymer up to 100°C

MATERIAL

Glass-fibre reinforced polyamide based (PA) technopolymer, black colour, matte finish.

PACKING RING

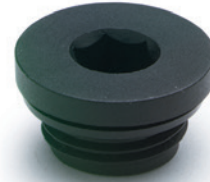
NBR synthetic rubber.

MAXIMUM CONTINUOUS WORKING TEMPERATURE

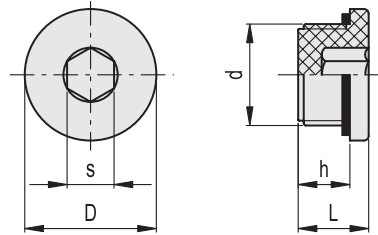
100°C.

TECHNICAL DATA

The tightening torque indicated in the table guarantees an optimal tightness, keeping the packing ring in the correct position.



ELESA Original design



Code	Description	d	h	s	D	L	Tightening torque [Nm]	⚖️
161032	TCE.1/8	G 1/8	9	5	14	12	1	3
161033	TCE.1/4	G 1/4	9	6	18	12	3	4
161034	TCE.3/8	G 3/8	9	8	22	13	3÷5	5
161035	TCE.1/2	G 1/2	11	10	28	15	3÷4	8
161036	TCE.3/4	G 3/4	12	12	32	16.5	3÷5	14
161037	TCE.1	G 1	13	17	40	17.5	10÷15	18.5
161038	TCE.1¼	G 1¼	13	22	50	19	10÷15	29.5
161039	TCE.1½	G 1½	13	24	55	18.5	15÷18	36.5
161052	TCE.10x1.5	M10x1.5	9	5	14	12	1	1.5
161053	TCE.12x1.5	M12x1.5	9	6	20	12	3	2.5
161054	TCE.14x1.5	M14x1.5	9	6	20	12	3	3
161055	TCE.16x1.5	M16x1.5	9	8	22	13	3÷5	4
161056	TCE.18x1.5	M18x1.5	11	10	28	15	3÷4	6
161057	TCE.20x1.5	M20x1.5	11	10	28	15	3÷4	7
161058	TCE.22x1.5	M22x1.5	12	12	32	16.5	3÷5	9.5