

Vacuum cup holders

Threaded connection male or female, steel, aluminium and brass

MATERIAL

Brass stem.
Steel spring.
Zinc-plated steel threaded sleeve and hexagonal nuts.
Quick fitting in blue anodised aluminium.

STANDARD EXECUTIONS

- **VPA-F**: with female threaded connection and straight quick fitting.
- **VPA-F-L**: with female threaded connection and L-shaped quick fitting.
- **VPA-M**: with male threaded connection and straight quick fitting.
- **VPA-M-L**: with male threaded connection and L-shaped quick fitting.

FEATURES

VPA vacuum cup suspensions comprise:

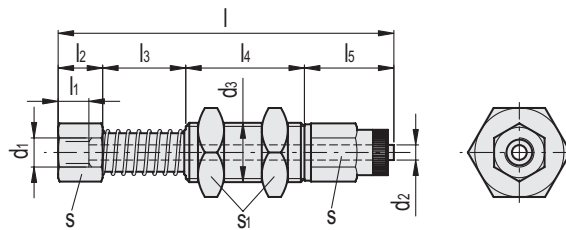
- a brass stem to fix the vacuum cup;
- a steel threaded sleeve, equipped with two hexagonal nuts, for quick assembly of the vacuum cup suspension to the automation device;
- a spring to cushion the impact of the vacuum cup and at the same time maintain a constant pressure with the load to be lifted;
- a quick fitting for connection to the suction hose.

The effective spring stroke is functional to the length (l3) of the stem, in particular:

- 16 mm for a length of 28 mm
- 49 mm for a length of 65 mm
- 74 mm for a length of 95 mm

Compatible with 6x8 diameter plastic hose.

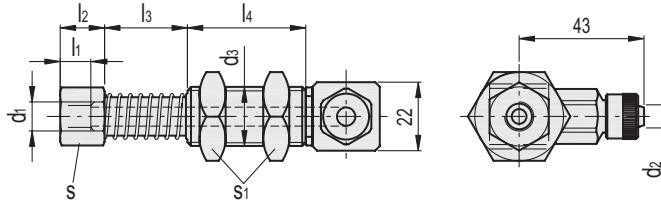
See Technical Data for vacuum cups (on page -).



VPA-F

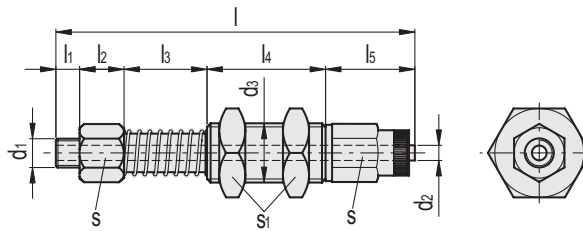
Code	Description	d1	d2*	d3	l	l1	l2	l3	l4	l5	s	s1	
VV.39001	VPA-08-28-G1/8-F	G1/8	6	M20	115	8	15	28	40	32	17	30	207
VV.39003	VPA-08-65-G1/8-F	G1/8	6	M20	152	8	15	65	40	32	17	30	243
VV.39005	VPA-08-95-G1/8-F	G1/8	6	M20	182	8	15	95	40	32	17	30	272
VV.39007	VPA-10-28-G1/4-F	G1/4	6	M20	120	8	20	28	40	32	17	30	224
VV.39009	VPA-10-65-G1/4-F	G1/4	6	M20	157	8	20	65	40	32	17	30	262
VV.39011	VPA-10-95-G1/4-F	G1/4	6	M20	187	8	20	95	40	32	17	30	289
VV.39013	VPA-11-28-M12-F	M12	6	M20	120	8	20	28	40	32	17	30	226
VV.39015	VPA-11-65-M12-F	M12	6	M20	157	8	20	65	40	32	17	30	264
VV.39017	VPA-11-95-M12-F	M12	6	M20	187	8	20	95	40	32	17	30	291
VV.39019	VPA-12-28-G3/8-F	G3/8	6	M20	125	8	25	28	40	32	17	30	220
VV.39021	VPA-12-65-G3/8-F	G3/8	6	M20	162	8	25	65	40	32	17	30	259
VV.39023	VPA-12-95-G3/8-F	G3/8	6	M20	192	8	25	95	40	32	17	30	285

* Compatible with compressed air tubes of the diameter in the table.



VPA-F-L

Code	Description	d1	d2*	d3	l1	l2	l3	l4	s	s1	⚖
VV.39002	VPA-08-28-G1/8-F-L	G1/8	6	M20	8	15	28	40	17	30	222
VV.39004	VPA-08-65-G1/8-F-L	G1/8	6	M20	8	15	65	40	17	30	258
VV.39006	VPA-08-95-G1/8-F-L	G1/8	6	M20	8	15	95	40	17	30	287
VV.39008	VPA-10-28-G1/4-F-L	G1/4	6	M20	8	20	28	40	17	30	239
VV.39010	VPA-10-65-G1/4-F-L	G1/4	6	M20	8	20	65	40	17	30	277
VV.39012	VPA-10-95-G1/4-F-L	G1/4	6	M20	8	20	95	40	17	30	304
VV.39014	VPA-11-28-M12-F-L	M12	6	M20	8	20	28	40	17	30	241
VV.39016	VPA-11-65-M12-F-L	M12	6	M20	8	20	65	40	17	30	279
VV.39018	VPA-11-95-M12-F-L	M12	6	M20	8	20	95	40	17	30	306
VV.39020	VPA-12-28-G3/8-F-L	G3/8	6	M20	8	25	28	40	17	30	235
VV.39022	VPA-12-65-G3/8-F-L	G3/8	6	M20	8	25	65	40	17	30	274
VV.39024	VPA-12-95-G3/8-F-L	G3/8	6	M20	8	25	95	40	17	30	300

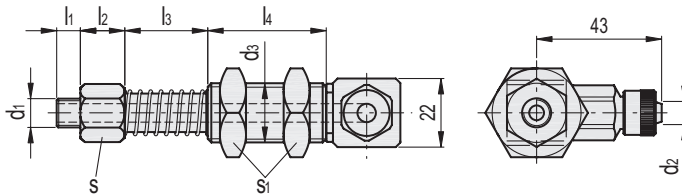


VPA-M

Code	Description	d1	d2*	d3	l	l1	l2	l3	l4	l5	s	s1	⚖
VV.39101	VPA-08-28-G1/8-M	G1/8	6	M20	123	8	15	28	40	32	17	30	216
VV.39103	VPA-08-65-G1/8-M	G1/8	6	M20	160	8	15	65	40	32	17	30	252
VV.39105	VPA-08-95-G1/8-M	G1/8	6	M20	190	8	15	95	40	32	17	30	282
VV.39107	VPA-10-28-G1/4-M	G1/4	6	M20	123	8	15	28	40	32	17	30	225
VV.39109	VPA-10-65-G1/4-M	G1/4	6	M20	160	8	15	65	40	32	17	30	266
VV.39111	VPA-10-95-G1/4-M	G1/4	6	M20	190	8	15	95	40	32	17	30	295
VV.39113	VPA-11-28-M12-M	M12	6	M20	124	9	15	28	40	32	17	30	223
VV.39115	VPA-11-65-M12-M	M12	6	M20	161	9	15	65	40	32	17	30	264
VV.39117	VPA-11-95-M12-M	M12	6	M20	191	9	15	95	40	32	17	30	293
VV.39119	VPA-12-28-G3/8-M	G3/8	6	M20	125	10	15	28	40	32	17	30	237
VV.39121	VPA-12-65-G3/8-M	G3/8	6	M20	162	10	15	65	40	32	17	30	274
VV.39123	VPA-12-95-G3/8-M	G3/8	6	M20	192	10	15	95	40	32	17	30	303

* Compatible with compressed air tubes of the diameter in the table.





VPA-M-L

Code	Description	d ₁	d ₂ *	d ₃	l ₁	l ₂	l ₃	l ₄	s	s ₁	⚖
VV.39102	VPA-08-28-G1/8-M-L	G1/8	6	M20	8	15	28	40	17	30	231
VV.39104	VPA-08-65-G1/8-M-L	G1/8	6	M20	8	15	65	40	17	30	267
VV.39106	VPA-08-95-G1/8-M-L	G1/8	6	M20	8	15	95	40	17	30	297
VV.39108	VPA-10-28-G1/4-M-L	G1/4	6	M20	8	15	28	40	17	30	240
VV.39110	VPA-10-65-G1/4-M-L	G1/4	6	M20	8	15	65	40	17	30	281
VV.39112	VPA-10-95-G1/4-M-L	G1/4	6	M20	8	15	95	40	17	30	310
VV.39114	VPA-11-28-M12-M-L	M12	6	M20	8	15	28	40	17	30	238
VV.39116	VPA-11-65-M12-M-L	M12	6	M20	8	15	65	40	17	30	279
VV.39118	VPA-11-95-M12-M-L	M12	6	M20	8	15	95	40	17	30	308
VV.39120	VPA-12-28-G3/8-M-L	G3/8	6	M20	8	15	28	40	17	30	252
VV.39122	VPA-12-65-G3/8-M-L	G3/8	6	M20	8	15	65	40	17	30	289
VV.39124	VPA-12-95-G3/8-M-L	G3/8	6	M20	8	15	95	40	17	30	318

* Compatible with compressed air tubes of the diameter in the table.